

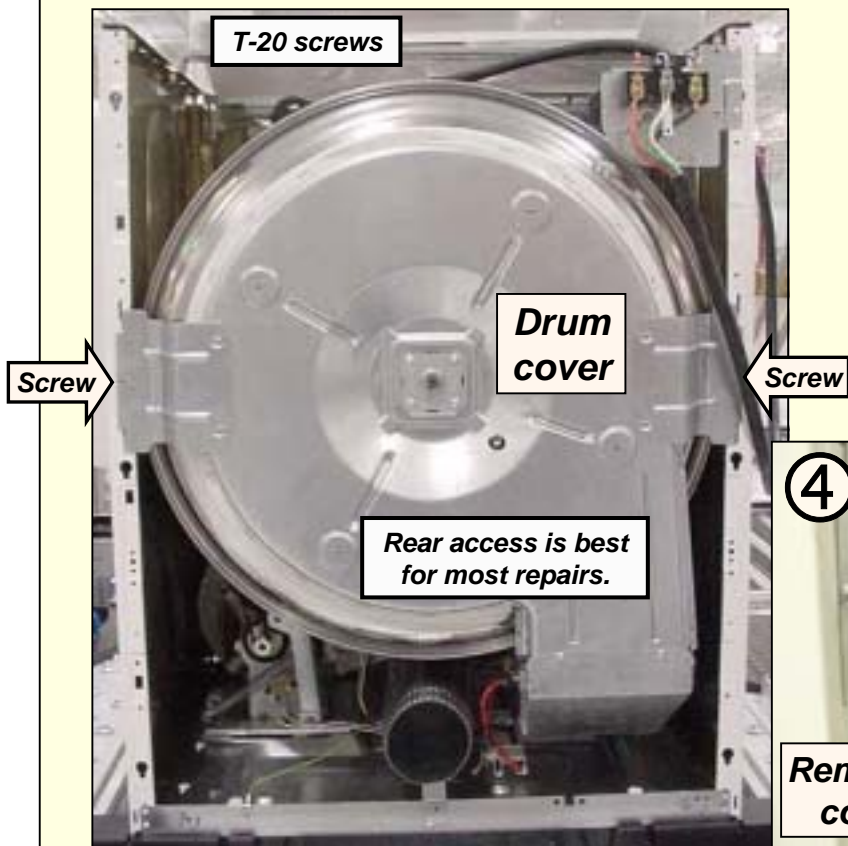
Disassembly -- Rear Panel & Drum Cover

To remove rear panel (to access drum, drum rear bearing, drum/fan drive motor, broken belt switch & heater (electric)/burner (gas) with R2 NTC & Hi-limit)

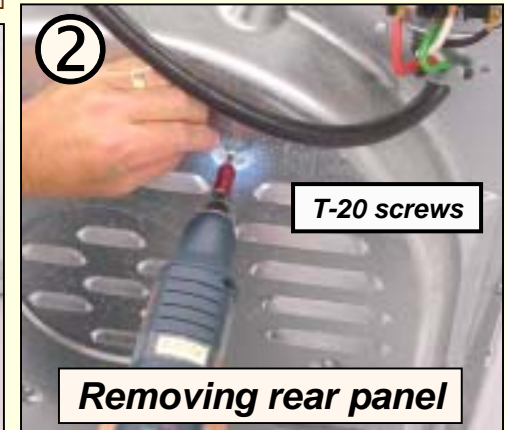
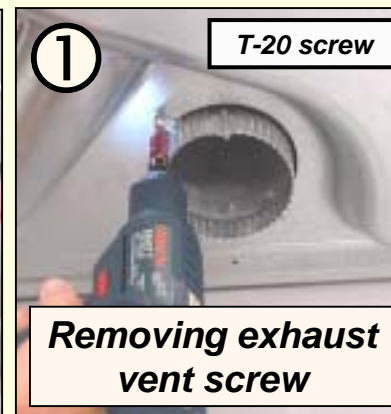
- Remove (22) rear panel screws, then lift panel up and out.
- To remove drum, remove rear drum cover and bearing by removing two (2) screws and lifting cover up.

HINT: Remove rear panel:

- To access drum, drum rear bearing, drum/fan drive motor, broken belt switch & heater (electric)/burner (gas) with R2 NTC & Hi-limit.
- To disconnect drum belt to facilitate front panel removal.



NOTE: The (22) screws includes the one (1) rear air duct screw.



Disassembly -- Drum

Removing drum:

- If not done already, disconnect wire harnesses hindering removing drum and place them out of the way. Leave the control module (with wire harnesses) mounted to the frame.
- Remove terminal block (electric dryers) for better access.
- If not done already, remove rear panel and drum cover (with rear bearing). Disconnect drum cover from duct area.
- Remove belt from drum and belt tensioner.
- Carefully lift drum (toward rear of dryer) out from front shield drum support wheels.

